



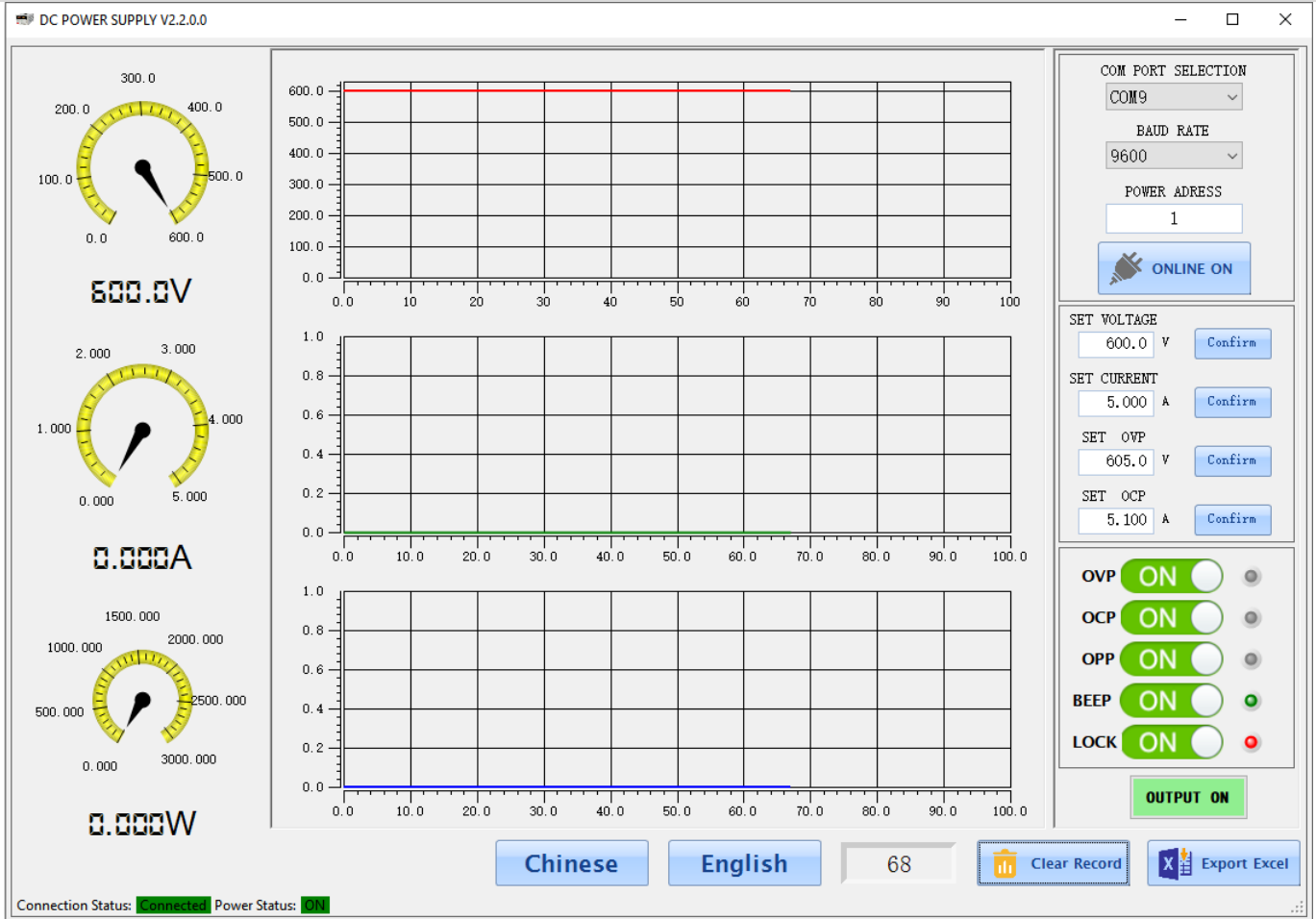
## Introduction

SPP series programmable DC power supply is switch mode DC power supply with USB interface for communication. The maximum power is up to 6kW. Within this power, SPP is open to comprehensive customization of max voltage 1000V and max current 300A.

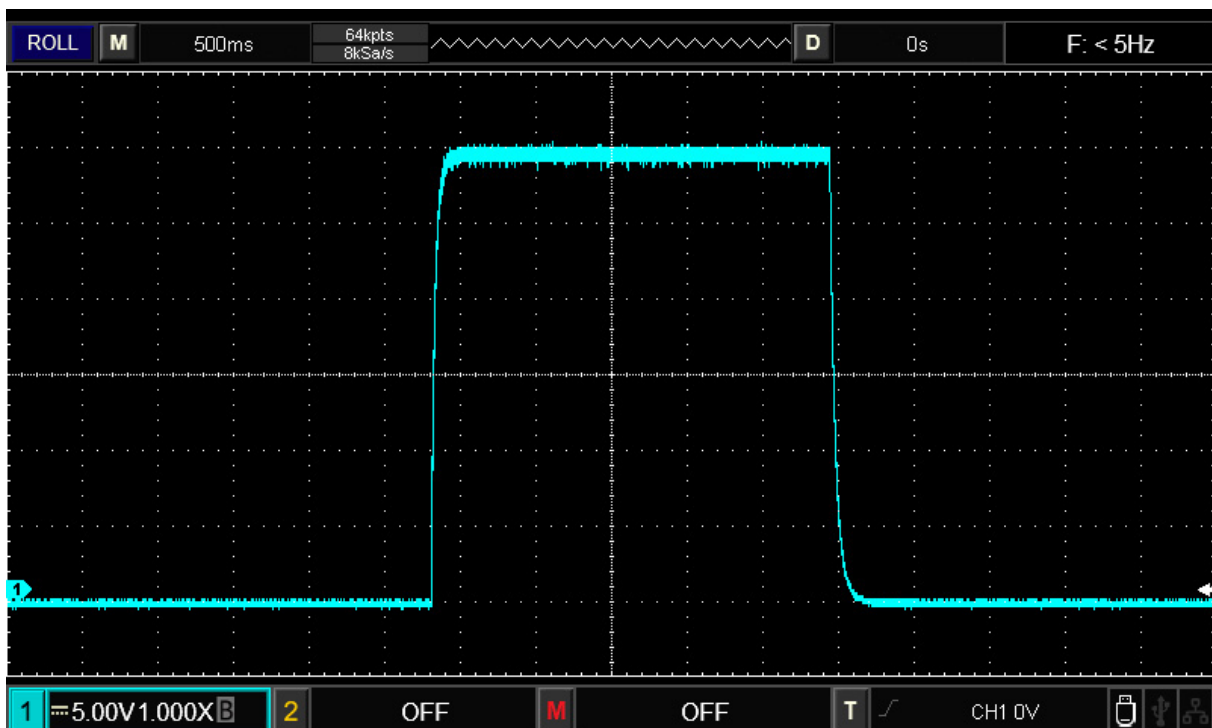
## Features

- ✓ Max. output power ranging from 500W to 6kW
- ✓ Max. output voltage 1000V, Max. output current 300A
- ✓ MCU digital control and advanced PWM regulation
- ✓ Compact design and light weight
- ✓ Constant voltage (CV) and constant current (CC) operations; Auto CV/CC switch
- ✓ Coarse and Fine control for voltage and current
- ✓ Over voltage, over current and over temperature protections
- ✓ Built-in beeper alarm
- ✓ Panel lock and output ON/OFF function
- ✓ Intelligent temperature control cooling fan
- ✓ USB interface, support MODBUS-RTU commands
- ✓ USB interface can be changed to RS232 or RS485 interface at request
- ✓ Customized specifications and functions acceptable

## Free PC control software



## No overshoot



# High Power DC Power Supply



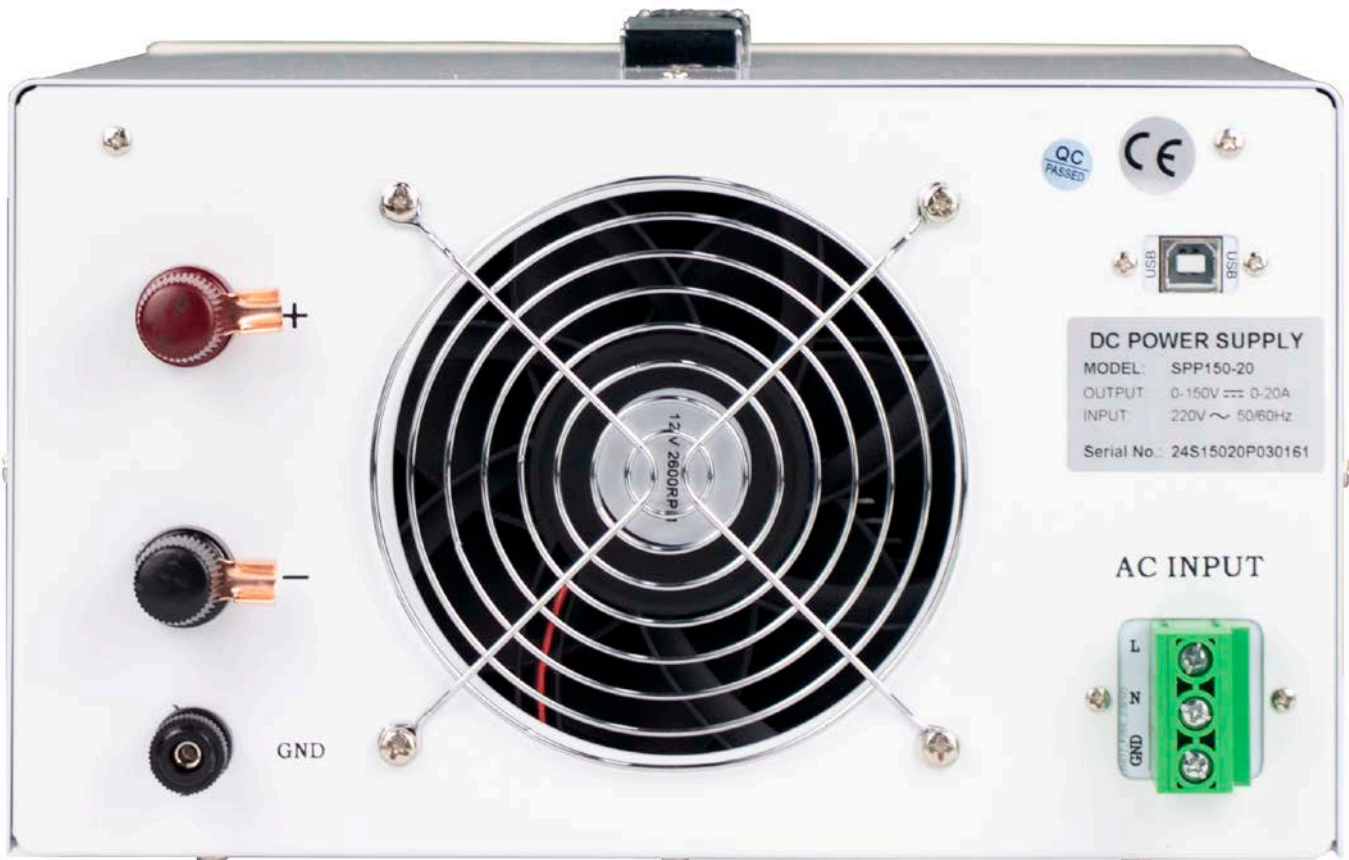
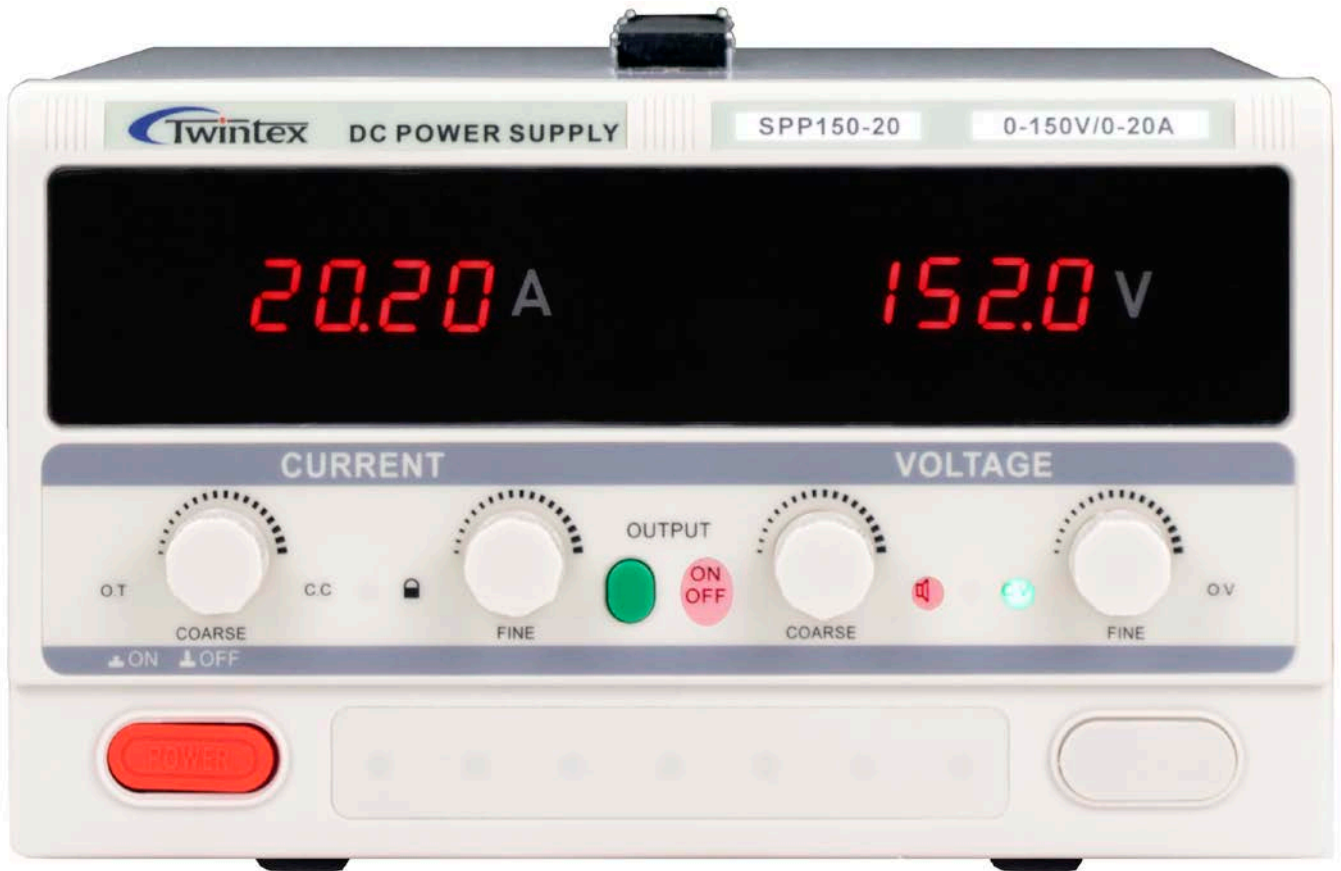
## Product photos (M chassis)



# High Power DC Power Supply



Product photos (L chassis & XL chassis)



# High Power DC Power Supply

## Specifications

<b>Output power</b>	<b>500W to 6000W</b>
<b>Working mode</b>	<b>PWM</b>
<b>Output</b>	
Output voltage	DC 0 to full range adjustable
Output current	DC 0 to full range adjustable
O.V.P. range	DC 1~110%FS
O.C.P. range	DC 1~110%FS
O.P.P. range	DC 1~100%FS
Line regulation	≤0.5%FS
Load regulation	≤0.5%FS
Ripple & Noise	≤0.5%FS rms
Setting accuracy	0.1%FS +1 digit
<b>Display</b>	
Voltmeter	4 digits LED display
Ammeter	4 digits LED display
Voltage resolution	0.000-9.999V; 00.00-99.99V; 000.0-999.9V
Current resolution	0.000-9.999A; 00.00-99.99A; 000.0-999.9A
Readback accuracy	0.1%FS +1 digit
<b>Communications</b>	
Interface	USB Device, can be changed to to RS232 or RS485 interface at request
Protocols	ModBus-RTU
<b>General</b>	
Protection	Over voltage, over current, over temperature and over power protections
Operating environment	0°C~40°C, <80%RH
Storage environment	-10°C ~70°C, <80%RH
Power source	AC110V/220V±10%, 50/60Hz
Input module	Power socket or terminal block
Dimension	260x160x380mm (L chassis, 500W~3000W) 260x160x440mm (XL chassis, 1800W~5000W)
Weight	Approx. 4kg to 9kg

Specifications are subject to change without prior notice.

# High Power DC Power Supply

## Selection guide

Model	Rated Voltage	Rated Current	Rated Power	Display Resolution	
<b>M chassis, 200Wx150Hx285D mm, 200W~1800W</b>					
SPP5-120	0~5V	0~120A	600W	1mV	100mA
SPP15-30	0~15V	0~30A	450W	10mV	10mA
SPP15-50	0~15V	0~50A	750W	10mV	10mA
SPP15-60	0~15V	0~60A	900W	10mV	10mA
SPP15-80	0~15V	0~80A	1200W	10mV	10mA
SPP15-100	0~15V	0~100A	1500W	10mV	100mA
SPP30-20	0~30V	0~20A	600W	10mV	10mA
SPP30-30	0~30V	0~30A	900W	10mV	10mA
SPP30-40	0~30V	0~40A	1200W	10mV	10mA
SPP30-50	0~30V	0~50A	1500W	10mV	10mA
SPP30-60M	0~30V	0~60A	1800W	10mV	10mA
SPP50-20	0~50V	0~20A	1000W	10mV	10mA
SPP50-30	0~50V	0~30A	1500W	10mV	10mA
SPP60-10	0~60V	0~10A	600W	10mV	10mA
SPP60-20	0~60V	0~20A	1200W	10mV	10mA
SPP60-30M	0~60V	0~30A	1800W	10mV	10mA
SPP100-5	0~100V	0~5A	500W	100mV	1mA
SPP100-6	0~100V	0~6A	600W	100mV	1mA
SPP100-10	0~100V	0~10A	1000W	100mV	10mA
SPP100-15	0~100V	0~15A	1500W	100mV	10mA
SPP120-5	0~120V	0~5A	600W	100mV	1mA
SPP120-10	0~120V	0~10A	1200W	100mV	10mA
SPP150-3	0~150V	0~3A	450W	100mV	1mA
SPP150-5	0~150V	0~5A	750W	100mV	1mA
SPP150-10	0~150V	0~10A	1500W	100mV	10mA
SPP200-1	0~200V	0~1A	200W	100mV	1mA
SPP200-2	0~200V	0~2A	400W	100mV	1mA
SPP200-3	0~200V	0~3A	600W	100mV	1mA
SPP200-5	0~200V	0~5A	1000W	100mV	1mA
SPP220-1	0~220V	0~1A	220W	100mV	1mA
SPP220-2	0~220V	0~2A	440W	100mV	1mA
SPP220-3	0~220V	0~3A	660W	100mV	1mA
SPP220-5	0~220V	0~5A	1100W	100mV	1mA
SPP250-1	0~250V	0~1A	250W	100mV	1mA
SPP250-2	0~220V	0~2A	500W	100mV	1mA
SPP250-3	0~250V	0~3A	750W	100mV	1mA
SPP250-4	0~250V	0~4A	1000W	100mV	1mA
SPP250-5	0~250V	0~5A	1250W	100mV	1mA
SPP300-1	0~300V	0~1A	300W	100mV	1mA
SPP300-2	0~300V	0~2A	600W	100mV	1mA
SPP300-3	0~300V	0~3A	900W	100mV	1mA
SPP300-5	0~300V	0~5A	1500W	100mV	1mA
SPP400-1	0~400V	0~1A	400W	100mV	1mA
SPP400-2	0~400V	0~2A	800W	100mV	1mA
SPP400-3	0~400V	0~3A	1200W	100mV	1mA

# High Power DC Power Supply

Model	Rated Voltage	Rated Current	Rated Power	Display Resolution	
<b>L chassis, 260Wx160Hx380D mm, 500W~3000W</b>					
SPP5-200	0~5V	0~200A	1000W	1mV	100mA
SPP15-120	0~15V	0~120A	1800W	10mV	100mA
SPP25-100	0~25V	0~100A	2500W	10mV	100mA
SPP30-60	0~30V	0~60A	1800W	10mV	10mA
SPP30-80	0~30V	0~80A	2400W	10mV	10mA
SPP30-1H	0~30V	0~100A	3000W	10mV	100mA
SPP50-40	0~50V	0~40A	2000W	10mV	10mA
SPP50-50	0~50V	0~50A	2500W	10mV	10mA
SPP50-60	0~50V	0~60A	3000W	10mV	10mA
SPP60-30	0~60V	0~30A	1800W	10mV	10mA
SPP60-40	0~60V	0~40A	2400W	10mV	10mA
SPP60-50	0~60V	0~50A	3000W	10mV	10mA
SPP80-20	0~80V	0~20A	1600W	10mV	10mA
SPP80-30	0~80V	0~30A	2400W	10mV	10mA
SPP100-20	0~100V	0~20A	2000W	100mV	10mA
SPP100-25	0~100V	0~25A	2500W	100mV	10mA
SPP100-30	0~100V	0~30A	3000W	100mV	10mA
SPP120-20	0~120V	0~20A	2400W	100mV	10mA
SPP150-20	0~150V	0~20A	3000W	100mV	10mA
SPP200-10	0~200V	0~10A	2000W	100mV	10mA
SPP220-10	0~220V	0~10A	2200W	100mV	10mA
SPP250-10	0~250V	0~10A	2500W	100mV	10mA
SPP400-5	0~400V	0~5A	2000W	100mV	1mA
SPP500-1	0~500V	0~1A	500W	100mV	1mA
SPP500-2	0~500V	0~2A	1000W	100mV	1mA
SPP500-3	0~500V	0~3A	1500W	100mV	1mA
SPP500-5	0~500V	0~5A	2500W	100mV	1mA
SPP600-1	0~600V	0~1A	600W	100mV	1mA
SPP600-2	0~600V	0~2A	1200W	100mV	1mA
SPP600-3	0~600V	0~3A	1800W	100mV	1mA
SPP800-1	0~800V	0~1A	800W	100mV	1mA
SPP800-2	0~800V	0~2A	1600W	100mV	1mA
SPP800-3	0~800V	0~3A	2400W	100mV	1mA
SPP1000-1	0~1000V	0~1A	1000W	1V	1mA
SPP1000-2	0~1000V	0~2A	2000W	1V	1mA
SPP1000-3	0~1000V	0~3A	3000W	1V	1mA

# High Power DC Power Supply

Model	Rated Voltage	Rated Current	Rated Power	Display Resolution	
<b>XL chassis, 260Wx160Hx440D mm, 1800W~6000W</b>					
SPP10-250	0~10V	0~250A	2500W	10mV	100mA
SPP15-150	0~15V	0~150A	2250W	10mV	100mA
SPP15-200	0~15V	0~200A	3000W	10mV	100mA
SPP30-120	0~30V	0~120A	3600W	10mV	100mA
SPP30-150	0~30V	0~150A	4500W	10mV	100mA
SPP30-200	0~30V	0~200A	6000W	10mV	100mA
SPP50-80	0~50V	0~80A	4000W	10mV	10mA
SPP50-100	0~50V	0~100A	5000W	10mV	100mA
SPP50-120	0~50V	0~120A	6000W	10mV	100mA
SPP60-60	0~60V	0~60A	3600W	10mV	10mA
SPP60-80	0~60V	0~80A	4800W	10mV	10mA
SPP60-100	0~60V	0~100A	6000W	10mV	100mA
SPP80-40	0~80V	0~40A	3200W	10mV	10mA
SPP80-50	0~80V	0~50A	4000W	10mV	10mA
SPP80-60	0~80V	0~60A	4800W	10mV	10mA
SPP100-40	0~100V	0~40A	4000W	100mV	10mA
SPP100-50	0~100V	0~50A	5000W	100mV	10mA
SPP100-60	0~100V	0~60A	6000W	100mV	10mA
SPP120-30	0~120V	0~30A	3600W	100mV	10mA
SPP120-40	0~120V	0~40A	4800W	100mV	10mA
SPP120-50	0~120V	0~50A	6000W	100mV	10mA
SPP150-30	0~150V	0~30A	4500W	100mV	10mA
SPP150-40	0~150V	0~40A	6000W	100mV	10mA
SPP200-20	0~200V	0~20A	4000W	100mV	10mA
SPP200-25	0~200V	0~25A	5000W	100mV	10mA
SPP200-30	0~200V	0~30A	6000W	100mV	10mA
SPP220-20	0~220V	0~20A	4400W	100mV	10mA
SPP250-20	0~250V	0~20A	5000W	100mV	10mA
SPP300-10	0~300V	0~10A	3000W	100mV	10mA
SPP300-15	0~300V	0~15A	4500W	100mV	10mA
SPP300-20	0~300V	0~20A	6000W	100mV	10mA
SPP400-10	0~400V	0~10A	4000W	100mV	10mA
SPP400-15	0~400V	0~15A	6000W	100mV	10mA
SPP500-10	0~500V	0~10A	5000W	100mV	10mA
SPP600-5	0~600V	0~5A	3000W	100mV	1mA
SPP600-8	0~600V	0~8A	4800W	100mV	1mA
SPP800-5	0~800V	0~5A	4000W	100mV	1mA
SPP800-6	0~800V	0~6A	4800W	100mV	1mA