



Introduction

The PCH series are high power output Switching DC power supply with rated power of 500W to 8KW. The PCH series adopts ZVZCS PWM technology, which greatly reduces switching consumption and therefore facilitates switching function with high efficiency and high stability.

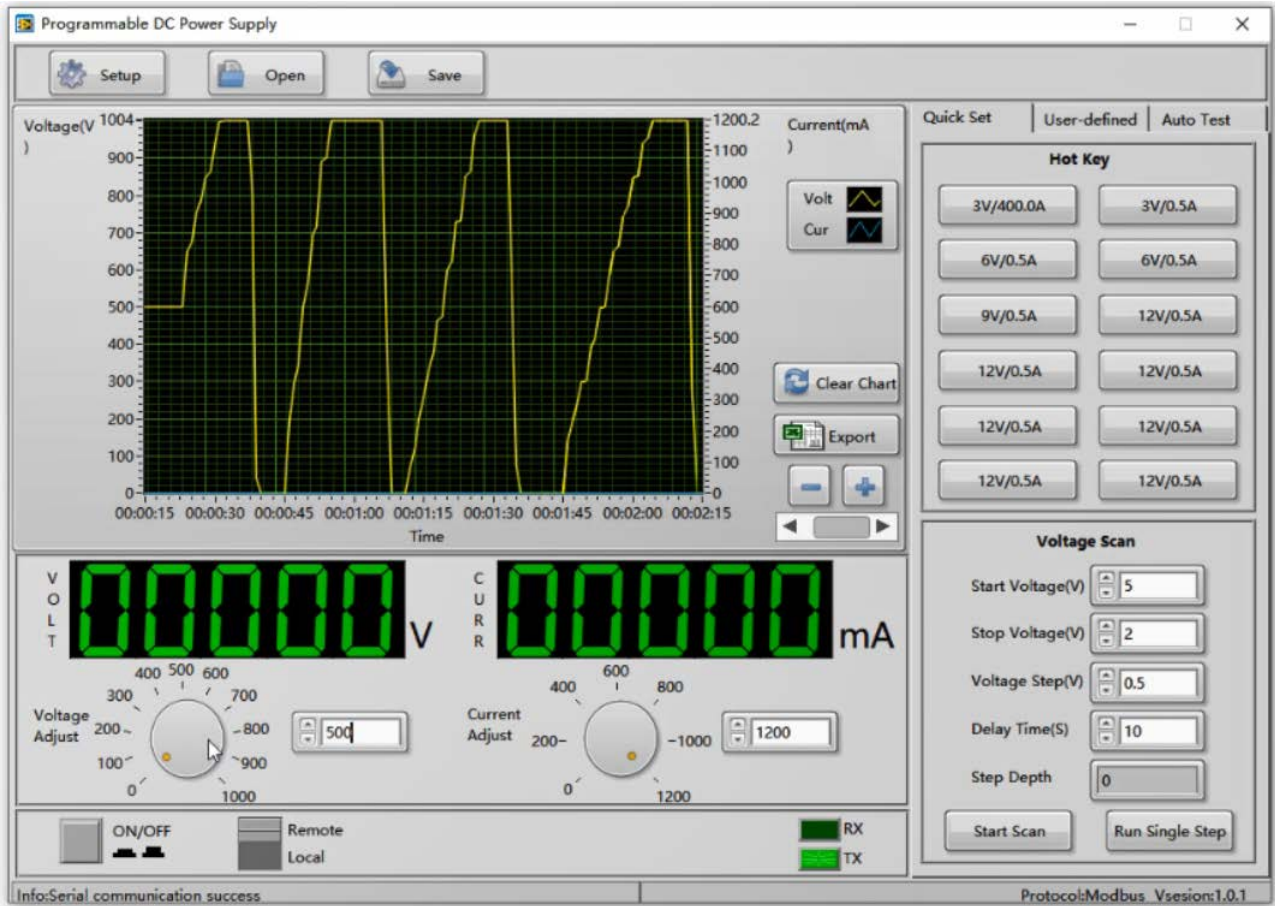
The PCH series are built into a 2U 19-inch standard chassis. The maximum rated voltage is from +1000V to +30KV. There is option for negative output from -1000V to -30KV. RS232 and RS485 communication interfaces are made as standard part for PCH series, providing multiple communication choices for digital control.

Features

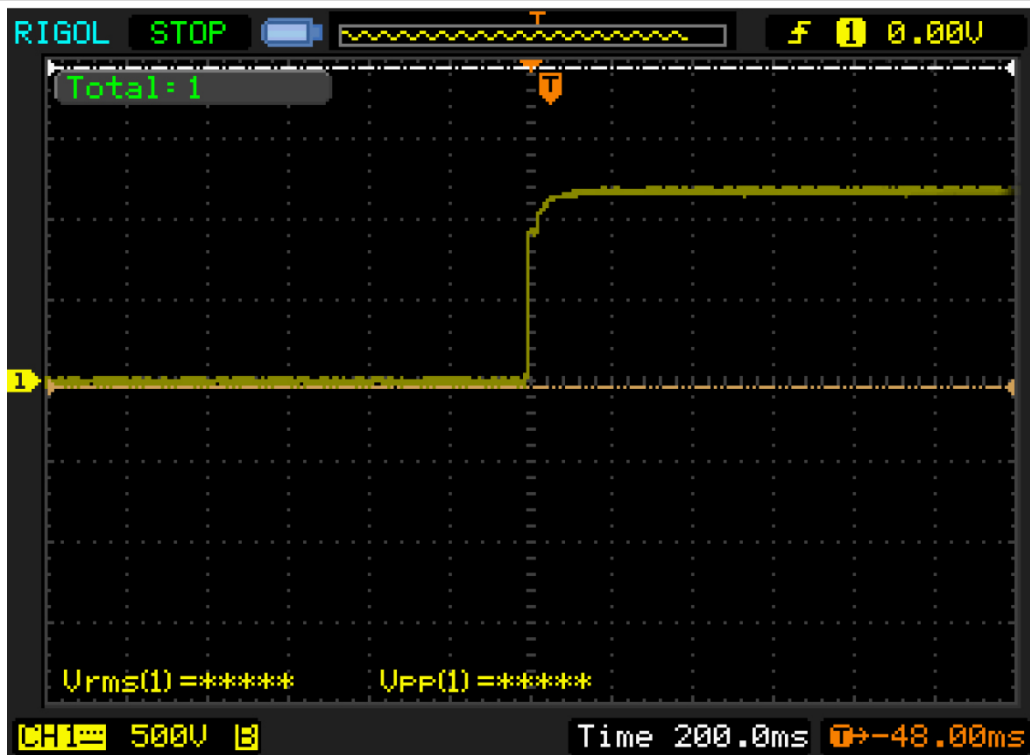
- ✓ Adopting ZVZCS PWM technology, high efficiency and high stability
- ✓ Max. rated output 500W to 8KW
- ✓ Max. rated voltage from +1000V to +30KV
- ✓ Option for negative output from -1000V to -30KV
- ✓ Constant voltage and constant current operations, auto CV/CC switch
- ✓ Built into 2U 19-inch standard chassis
- ✓ Thermostatic control fan, low noise
- ✓ Low ripple, high stability
- ✓ No overshoot during startup
- ✓ List mode function, Auto Run function
- ✓ Preset function, setting of voltage and current with output open circuit
- ✓ Front panel operation: preset voltage and current, output ON/OFF
- ✓ Multiple protections: OVP, OTP, UVP and current limit protections
- ✓ Multiple programming interfaces: RS232, RS485
- ✓ Support ModBus-RTU commands

Free PC Software

Multiple remote control and sampling functions. Such as: voltage & current setup, voltage & current feedback, data recording, export data to EXCEL, List mode function, auto run function. **Adjustable voltage rise time.**



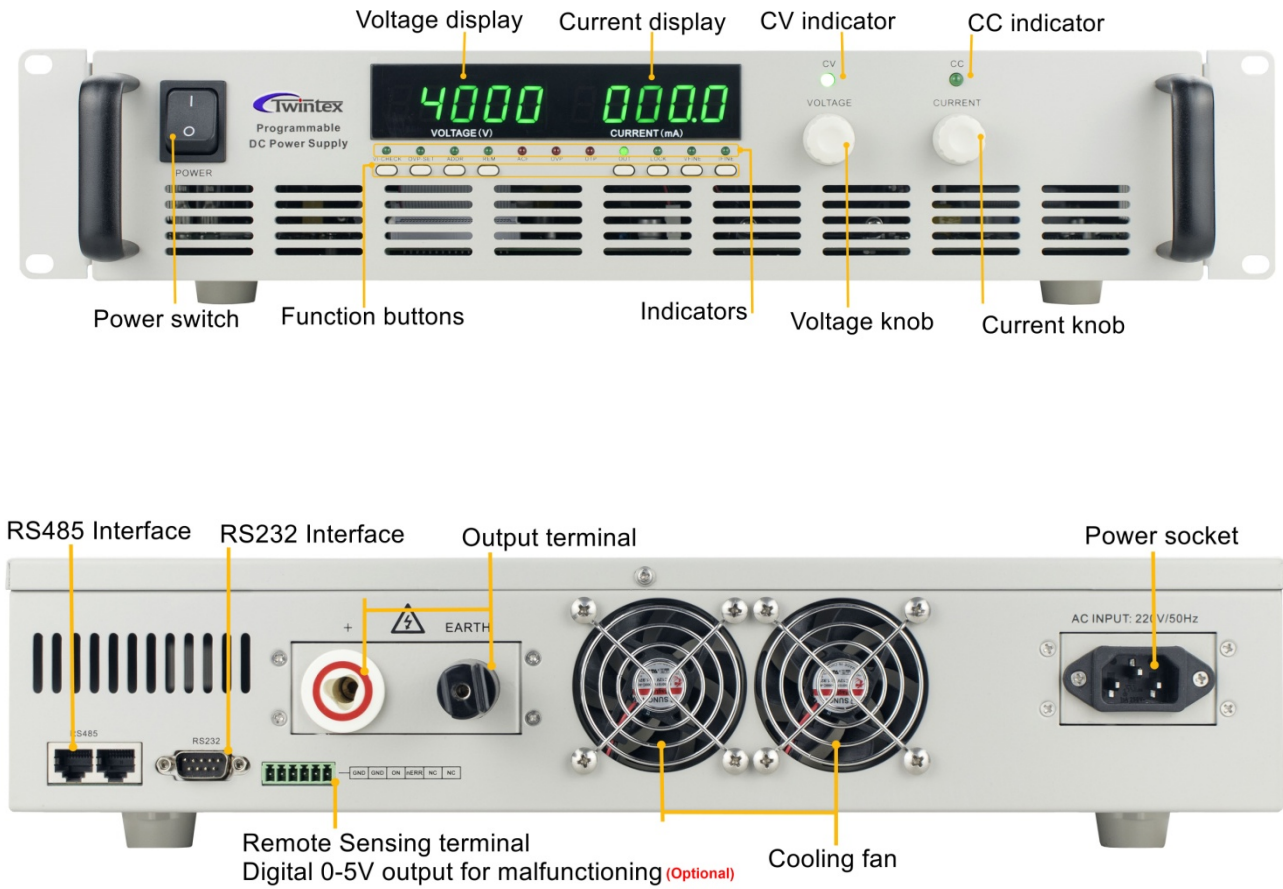
No overshoot



High Voltage DC Power Supply



Panel Descriptions (2U frame)



High Voltage DC Power Supply



Product Photos (1/2 2U frame for 600W, Max 3kV)



Product Photos (2U frame for 600W~5kW)



(220Vac input for 600W ~ 2.4kW)



(380Vac input for 2.4kW ~ 5kW)

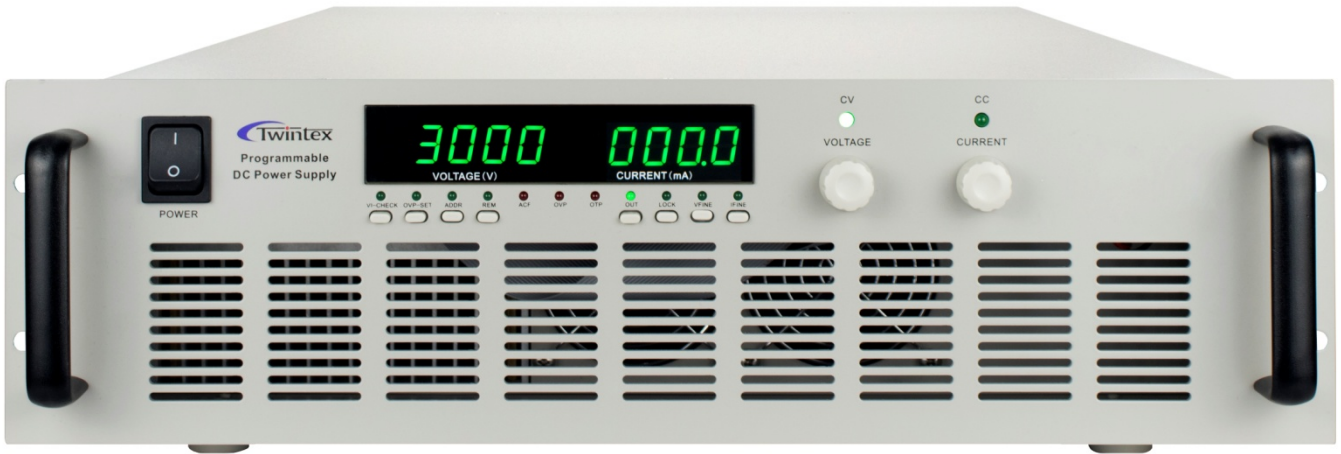
TWINTEX • www.twintex.com.tw

Taipei, Taiwan: Tel: +886-02-2915 0101 • Fax: +886-02-2916 0101
Shenzhen, China: Tel.: +86-755-2812 9890 • Fax: +86-755-2814 9802

High Voltage DC Power Supply



Product Photos (3U frame for 6kW~8kW)



TWINTEX • www.twintex.com.tw

Taipei, Taiwan: Tel: +886-02-2915 0101 • Fax: +886-02-2916 0101
Shenzhen, China: Tel.: +86-755-2812 9890 • Fax: +86-755-2814 9802

Specifications

Output		
Rated Voltage	Full range adjustable	
Rated Current	Full range adjustable	
OVP Range	Up to 105% of rated voltage adjustable	
Line Regulation	CV \leq 0.5%+2LSB, CC \leq 0.5%+2LSB	
Load Regulation	CV \leq 0.1%+2LSB, CC \leq 0.1%+2LSB	
Ripple & Noise	\leq 0.05% FS, \leq 0.1% FS	
Programming		
Programming	Voltage	1V
Resolution	Current	0.01mA / 0.1mA / 1mA
	OVP	1V
Interface	RS232, RS485	
Commands	ModBus-RTU	
Display		
Meter	Voltage	4 digits LED display for 1000V to 8000V, 5 digits LED display for 10000V to 30000V
	Current	4 digits LED display
Display	Voltage	1V
	Current	0.01mA / 0.1mA / 1mA
Accuracy	Voltage	\leq 0.2%FS+2LSB
	Current	\leq 0.5%FS+2LSB
Protection		
Over Voltage Protection (O.V.P.)	Built-in OVP protection with limit of 105% rated output voltage. The output will be shut down when OVP is activated.	
Over Temperature Protection (O.T.P.)	Built-in OTP protection with heat sink temperature limit of 50°C \pm 5%. The output will be shut down when OTP is activated.	
Under Voltage Protection (U.V.P.)	Built-in UVP protection with limit of 165Vac. The output will be shut down when UVP is activated.	
General		
Cooling method	Cooling fan	
Operating environment	0°C~40°C, 10%~80%RH	
Storage environment	-20°C~70°C, 10%~90%RH	

High Voltage DC Power Supply



Model (500W)	Rated Output			Voltage Ripple	Programming Resolution			Display Resolution	
	V	A	OVP		V	A	OVP	V	A
PCH500-10K	300V~10kV	0~50mA	0~10500V	≤0.1% FS	1V	0.10mA	1V	1V	0.01mA
PCH500-10KN	-300V~-10kV	0~50mA	0~-10500V	≤0.1% FS	1V	0.10mA	1V	1V	0.01mA
PCH500-12K	360V~12kV	0~42mA	0~12600V	≤0.1% FS	1V	0.10mA	1V	1V	0.01mA
PCH500-12KN	-360V~-12kV	0~42mA	0~-12600V	≤0.1% FS	1V	0.10mA	1V	1V	0.01mA
PCH500-15K	450V~15kV	0~34mA	0~15750V	≤0.1% FS	1V	0.10mA	1V	1V	0.01mA
PCH500-15KN	-450V~-15kV	0~34mA	0~-15750V	≤0.1% FS	1V	0.10mA	1V	1V	0.01mA
PCH500-20K	1000V~20kV	0~25mA	0~21000V	≤0.1% FS	1V	0.10mA	1V	1V	0.01mA
PCH500-20KN	-1000V~-20kV	0~25mA	0~-21000V	≤0.1% FS	1V	0.10mA	1V	1V	0.01mA
PCH500-25K	1250V~25kV	0~20mA	0~26250V	≤0.1% FS	1V	0.10mA	1V	1V	0.01mA
PCH500-25KN	-1250V~-25kV	0~20mA	0~-26250V	≤0.1% FS	1V	0.10mA	1V	1V	0.01mA
PCH500-30K	1500V~30kV	0~17mA	0~31500V	≤0.1% FS	1V	0.10mA	1V	1V	0.01mA
PCH500-30KN	-1500V~-30kV	0~17mA	0~-31500V	≤0.1% FS	1V	0.10mA	1V	1V	0.01mA
Dimensions	482.6Wx88Hx506D mm (2U)								
Weight	Approx 11kg								
AC Input	1φ3W, 220V±10% 47~63Hz								

Model (600W)	Rated Output			Voltage Ripple	Programming Resolution			Display Resolution	
	V	A	OVP		V	A	OVP	V	A
PCH600-10HS	0~1000V	0~600mA	0~1050V	≤0.05% FS	1V	0.1mA	1V	1V	0.1mA
PCH600-10HSN	-200~-1000V	0~600mA	-200~-1050V	≤0.05% FS	1V	0.1mA	1V	1V	0.1mA
PCH600-12HS	0~1200V	0~500mA	0~1260V	≤0.05% FS	1V	0.1mA	1V	1V	0.1mA
PCH600-12HSN	-240~-1200V	0~500mA	-240~ -1260V	≤0.05% FS	1V	0.1mA	1V	1V	0.1mA
PCH600-15HS	0~1500V	0~400mA	0~1575V	≤0.05% FS	1V	0.1mA	1V	1V	0.1mA
PCH600-15HSN	-300~-1500V	0~400mA	-300~ -1575V	≤0.05% FS	1V	0.1mA	1V	1V	0.1mA
PCH600-20HS	0~2000V	0~300mA	0~2100V	≤0.1% FS	1V	0.1mA	1V	1V	0.1mA
PCH600-20HSN	-400~-2000V	0~300mA	-400~ -2100V	≤0.1% FS	1V	0.1mA	1V	1V	0.1mA
PCH600-30HS	200~3000V	0~200mA	200~3150V	≤0.1% FS	1V	0.1mA	1V	1V	0.1mA
PCH600-30HSN	-600~-3000V	0~200mA	-600~ -3150V	≤0.1% FS	1V	0.1mA	1V	1V	0.1mA
Dimensions	212.5Wx88Hx340D mm (1/2 2U)								
Weight	Approx 5kg								
AC Input	1φ3W, 220V±10% 47~63Hz								

TWINTEX • www.twintex.com.tw

Taipei, Taiwan: Tel: +886-02-2915 0101 • Fax: +886-02-2916 0101
 Shenzhen, China: Tel.: +86-755-2812 9890 • Fax: +86-755-2814 9802

High Voltage DC Power Supply



Model (600W)	Rated Output			Voltage Ripple	Programming Resolution			Display Resolution	
	V	A	OVP		V	A	OVP	V	A
PCH600-10H	0~1000V	0~600mA	0~1050V	≤0.05% FS	1V	0.1mA	1V	1V	0.1mA
PCH600-10HN	-200~-1000V	0~600mA	-200~-1050V	≤0.05% FS	1V	0.1mA	1V	1V	0.1mA
PCH600-12H	0~1200V	0~500mA	0~1260V	≤0.05% FS	1V	0.1mA	1V	1V	0.1mA
PCH600-12HN	-240~-1200V	0~500mA	-240~ -1260V	≤0.05% FS	1V	0.1mA	1V	1V	0.1mA
PCH600-15H	0~1500V	0~400mA	0~1575V	≤0.05% FS	1V	0.1mA	1V	1V	0.1mA
PCH600-15HN	-300~-1500V	0~400mA	-300~ -1575V	≤0.05% FS	1V	0.1mA	1V	1V	0.1mA
PCH600-20H	0~2000V	0~300mA	0~2100V	≤0.1% FS	1V	0.1mA	1V	1V	0.1mA
PCH600-20HN	-400~-2000V	0~300mA	-400~ -2100V	≤0.1% FS	1V	0.1mA	1V	1V	0.1mA
PCH600-30H	200~3000V	0~200mA	200~3150V	≤0.1% FS	1V	0.1mA	1V	1V	0.1mA
PCH600-30HN	-600~-3000V	0~200mA	-600~ -3150V	≤0.1% FS	1V	0.1mA	1V	1V	0.1mA
PCH600-40H	200~4000V	0~150mA	200~4200V	≤0.1% FS	1V	0.1mA	1V	1V	0.1mA
PCH600-40HN	-800~ -4000V	0~150mA	-800~ -4200V	≤0.1% FS	1V	0.1mA	1V	1V	0.1mA
PCH600-50H	300~5000V	0~120mA	300~5250V	≤0.1% FS	1V	0.1mA	1V	1V	0.1mA
PCH600-50HN	-1000~ -5000V	0~120mA	-1000~ -5250V	≤0.1% FS	1V	0.1mA	1V	1V	0.1mA
PCH600-60H	400~6000V	0~100mA	400~6120V	≤0.1% FS	1V	0.01mA	1V	1V	0.01mA
PCH600-60HN	-1200~ -6000V	0~100mA	-1200~ -6120V	≤0.1% FS	1V	0.01mA	1V	1V	0.01mA
PCH600-80H	500~8000V	0~75mA	500~8400V	≤0.1% FS	1V	0.01mA	1V	1V	0.01mA
PCH600-80HN	-1600~ -8000V	0~75mA	-1600~-8400V	≤0.1% FS	1V	0.01mA	1V	1V	0.01mA
PCH600-100H	800~10000V	0~60mA	800~10500V	≤0.1% FS	1V	0.01mA	1V	1V	0.01mA
PCH600-100HN	-2000~ -10000V	0~60mA	-2000~ -10500V	≤0.1% FS	1V	0.01mA	1V	1V	0.01mA
PCH600-120H	1000~12000V	0~50mA	1000~12600V	≤0.1% FS	1V	0.01mA	1V	1V	0.01mA
PCH600-120HN	-2400~ -12000V	0~50mA	-2400~ -12600V	≤0.1% FS	1V	0.01mA	1V	1V	0.01mA
Dimensions	425W×88H×463D mm (2U)								
Weight	Approx 12kg								
AC Input	1φ3W, 220V±10% 47~63Hz								

High Voltage DC Power Supply



Model (1200W)	Rated Output			Voltage Ripple	Programming Resolution			Display Resolution	
	V	A	OVP		V	A	OVP	V	A
PCH1200-10H	0~1000V	0~1200mA	0~1050V	≤0.1% FS	1V	1mA	1V	1V	1mA
PCH1200-10HN	-200~-1000V	0~1200mA	-200~-1050V	≤0.1% FS	1V	1mA	1V	1V	1mA
PCH1200-12H	0~1200V	0~1000mA	0~1260V	≤0.1% FS	1V	1mA	1V	1V	1mA
PCH1200-12HN	-240~-1200V	0~1000mA	-240~ -1260V	≤0.1% FS	1V	1mA	1V	1V	1mA
PCH1200-15H	0~1500V	0~800mA	0~1575V	≤0.1% FS	1V	0.1mA	1V	1V	0.1mA
PCH1200-15HN	-300~-1500V	0~800mA	-300~ -1575V	≤0.1% FS	1V	0.1mA	1V	1V	0.1mA
PCH1200-20H	0~2000V	0~600mA	0~2100V	≤0.1% FS	1V	0.1mA	1V	1V	0.1mA
PCH1200-20HN	-400~-2000V	0~600mA	-400~ -2100V	≤0.1% FS	1V	0.1mA	1V	1V	0.1mA
PCH1200-30H	200~3000V	0~400mA	200~3150V	≤0.1% FS	1V	0.1mA	1V	1V	0.1mA
PCH1200-30HN	-600~-3000V	0~400mA	-600~ -3150V	≤0.1% FS	1V	0.1mA	1V	1V	0.1mA
PCH1200-40H	200~4000V	0~300mA	200~4200V	≤0.1% FS	1V	0.1mA	1V	1V	0.1mA
PCH1200-40HN	-800~ -4000V	0~300mA	-800~ -4200V	≤0.1% FS	1V	0.1mA	1V	1V	0.1mA
PCH1200-50H	300~5000V	0~240mA	300~5250V	≤0.1% FS	1V	0.1mA	1V	1V	0.1mA
PCH1200-50HN	-1000~ -5000V	0~240mA	-1000~ -5250V	≤0.1% FS	1V	0.1mA	1V	1V	0.1mA
PCH1200-60H	400~6000V	0~200mA	400~6120V	≤0.1% FS	1V	0.1mA	1V	1V	0.1mA
PCH1200-60HN	-1200~ -6000V	0~200mA	-1200~ -6120V	≤0.1% FS	1V	0.1mA	1V	1V	0.1mA
PCH1200-80H	500~8000V	0~150mA	500~8400V	≤0.1% FS	1V	0.1mA	1V	1V	0.1mA
PCH1200-80HN	-1600~ -8000V	0~150mA	-1600~-8400V	≤0.1% FS	1V	0.1mA	1V	1V	0.1mA
PCH1200-100H	800~10000V	0~120mA	800~10500V	≤0.1% FS	1V	0.1mA	1V	1V	0.1mA
PCH1200-100HN	-2000~ -10000V	0~120mA	-2000~ -10500V	≤0.1% FS	1V	0.1mA	1V	1V	0.1mA
PCH1200-120H	1000~12000V	0~100mA	1000~12600V	≤0.1% FS	1V	0.01mA	1V	1V	0.1mA
PCH1200-120HN	-2400~ -12000V	0~100mA	-2400~ -12600V	≤0.1% FS	1V	0.01mA	1V	1V	0.1mA
Dimensions	425W×88H×463D mm (2U)								
Weight	Approx 13kg								
AC Input	1φ3W, 220V±10% 47~63Hz								

High Voltage DC Power Supply



Model (2400W)	Rated Output			Voltage Ripple	Programming Resolution			Display Resolution	
	V	A	OVP		V	A	OVP	V	A
PCH2400-10H	0~1000V	0~2400mA	0~1050V	≤0.1% FS	1V	1mA	1V	1V	1mA
PCH2400-10HN	-200~-1000V	0~2400mA	-200~-1050V	≤0.1% FS	1V	1mA	1V	1V	1mA
PCH2400-12H	0~1200V	0~2000mA	0~1260V	≤0.1% FS	1V	1mA	1V	1V	1mA
PCH2400-12HN	-240~-1200V	0~200mA	-240~ -1260V	≤0.1% FS	1V	1mA	1V	1V	1mA
PCH2400-15H	0~1500V	0~1600mA	0~1575V	≤0.1% FS	1V	1mA	1V	1V	1mA
PCH2400-15HN	-300~-1500V	0~1600mA	-300~ -1575V	≤0.1% FS	1V	1mA	1V	1V	1mA
PCH2400-20H	0~2000V	0~1200mA	0~2100V	≤0.1% FS	1V	1mA	1V	1V	1mA
PCH2400-20HN	-400~-2000V	0~1200mA	-400~ -2100V	≤0.1% FS	1V	1mA	1V	1V	1mA
PCH2400-30H	200~3000V	0~800mA	200~3150V	≤0.1% FS	1V	0.1mA	1V	1V	0.1mA
PCH2400-30HN	-600~-3000V	0~800mA	-600~ -3150V	≤0.1% FS	1V	0.1mA	1V	1V	0.1mA
PCH2400-40H	200~4000V	0~600mA	200~4200V	≤0.1% FS	1V	0.1mA	1V	1V	0.1mA
PCH2400-40HN	-800~ -4000V	0~600mA	-800~ -4200V	≤0.1% FS	1V	0.1mA	1V	1V	0.1mA
PCH2400-50H	300~5000V	0~480mA	300~5250V	≤0.1% FS	1V	0.1mA	1V	1V	0.1mA
PCH2400-50HN	-1000~ -5000V	0~480mA	-1000~ -5250V	≤0.1% FS	1V	0.1mA	1V	1V	0.1mA
PCH2400-60H	400~6000V	0~400mA	400~6120V	≤0.1% FS	1V	0.1mA	1V	1V	0.1mA
PCH2400-60HN	-1200~ -6000V	0~400mA	-1200~ -6120V	≤0.1% FS	1V	0.1mA	1V	1V	0.1mA
PCH2400-80H	500~8000V	0~300mA	500~8400V	≤0.1% FS	1V	0.1mA	1V	1V	0.1mA
PCH2400-80HN	-1600~ -8000V	0~300mA	-1600~-8400V	≤0.1% FS	1V	0.1mA	1V	1V	0.1mA
PCH2400-100H	800~10000V	0~240mA	800~10500V	≤0.1% FS	1V	0.1mA	1V	1V	0.1mA
PCH2400-100HN	-2000~ -10000V	0~240mA	-2000~ -10500V	≤0.1% FS	1V	0.1mA	1V	1V	0.1mA
Dimensions	425Wx88Hx463D mm (2U) for 1kV to 5kV models 482.6Wx88Hx533D mm (2U-L) for 6kV to 10kV models								
Weight	Approx 13kg								
AC Input	1φ3W, 220V±10% 47~63Hz for 1kV to 5kV models 3φ4W, 380V±10% 47~63Hz for 6kV & 10kV models								

High Voltage DC Power Supply



Model (3000W)	Rated Output			Voltage Ripple	Programming Resolution			Display Resolution	
	V	A	OVP		V	A	OVP	V	A
PCH3000-10H	0~1000V	0~3000mA	0~1050V	≤0.1% FS	1V	1mA	1V	1V	1mA
PCH3000-10HN	-200~-1000V	0~3000mA	-200~-1050V	≤0.1% FS	1V	1mA	1V	1V	1mA
PCH3000-12H	0~1200V	0~2500mA	0~1260V	≤0.1% FS	1V	1mA	1V	1V	1mA
PCH3000-12HN	-240~-1200V	0~2500mA	-240~ -1260V	≤0.1% FS	1V	1mA	1V	1V	1mA
PCH3000-15H	0~1500V	0~2000mA	0~1575V	≤0.1% FS	1V	1mA	1V	1V	1mA
PCH3000-15HN	-300~-1500V	0~2000mA	-300~ -1575V	≤0.1% FS	1V	1mA	1V	1V	1mA
PCH3000-20H	0~2000V	0~1500mA	0~2100V	≤0.1% FS	1V	1mA	1V	1V	1mA
PCH3000-20HN	-400~-2000V	0~1500mA	-400~ -2100V	≤0.1% FS	1V	1mA	1V	1V	1mA
PCH3000-30H	200~3000V	0~1000mA	200~3150V	≤0.1% FS	1V	0.1mA	1V	1V	1mA
PCH3000-30HN	-600~-3000V	0~1000mA	-600~ -3150V	≤0.1% FS	1V	0.1mA	1V	1V	1mA
PCH3000-40H	200~4000V	0~750mA	200~4200V	≤0.1% FS	1V	0.1mA	1V	1V	0.1mA
PCH3000-40HN	-800~ -4000V	0~750mA	-800~ -4200V	≤0.1% FS	1V	0.1mA	1V	1V	0.1mA
PCH3000-50H	300~5000V	0~600mA	300~5250V	≤0.1% FS	1V	0.1mA	1V	1V	0.1mA
PCH3000-50HN	-1000~ -5000V	0~600mA	-1000~ -5250V	≤0.1% FS	1V	0.1mA	1V	1V	0.1mA
PCH3000-60H	400~6000V	0~500mA	400~6120V	≤0.1% FS	1V	0.1mA	1V	1V	0.1mA
PCH3000-60HN	-1200~ -6000V	0~500mA	-1200~ -6120V	≤0.1% FS	1V	0.1mA	1V	1V	0.1mA
PCH3000-80H	500~8000V	0~375mA	500~8400V	≤0.1% FS	1V	0.1mA	1V	1V	0.1mA
PCH3000-80HN	-1600~ -8000V	0~375mA	-1600~-8400V	≤0.1% FS	1V	0.1mA	1V	1V	0.1mA
PCH3000-100H	800~10000V	0~300mA	800~10500V	≤0.1% FS	1V	0.1mA	1V	1V	0.1mA
PCH3000-100HN	-2000~ -10000V	0~300mA	-2000~ -10500V	≤0.1% FS	1V	0.1mA	1V	1V	0.1mA
Dimensions	425Wx88Hx463D mm (2U) for 1kV to 5kV models 482.6Wx88Hx533D mm (2U-L) for 6kV to 10kV models								
Weight	Approx 13kg								
AC Input	1φ3W, 220V±10% 47~63Hz for 1kV to 5kV models 3φ4W, 380V±10% 47~63Hz for 6kV & 10kV models								

High Voltage DC Power Supply



Model (4000W)	Rated Output			Voltage Ripple	Programming Resolution			Display Resolution	
	V	A	OVP		V	A	OVP	V	A
PCH4000-8H	0~800V	0~5000mA	0~ 840V	≤0.1% FS	0.1V	1mA	0.1V	0.1V	1mA
PCH4000-10H	0~1000V	0~4000mA	0~1050V	≤0.1% FS	1V	1mA	1V	1V	1mA
PCH4000-10HN	-200~ -1000V	0~4000mA	-200~ -1050V	≤0.1% FS	1V	1mA	1V	1V	1mA
PCH4000-12H	0~1200V	0~3300mA	0~1260V	≤0.1%FS	1V	1mA	1V	1V	1mA
PCH4000-12HN	-240~ -1200V	0~3300mA	-240~ -1260V	≤0.1% FS	1V	1mA	1V	1V	1mA
PCH4000-15H	0~1500V	0~2600mA	0~1575V	≤0.1%FS	1V	1mA	1V	1V	1mA
PCH4000-15HN	-300~-1500V	0~2600mA	-300~ -1575V	≤0.1% FS	1V	1mA	1V	1V	1mA
PCH4000-20H	0~2000V	0~2000mA	0~2100V	≤0.1% FS	1V	1mA	1V	1V	1mA
PCH4000-20HN	-400~ -2000V	0~2000mA	-400~ -2100V	≤0.1% FS	1V	1mA	1V	1V	1mA
PCH4000-30H	400~3000V	0~1300mA	400~3150V	≤0.1% FS	1V	1mA	1V	1V	1mA
PCH4000-30HN	-600~ -3000V	0~1300mA	-600~ -3150V	≤0.1% FS	1V	1mA	1V	1V	1mA
PCH4000-40H	550~4000V	0~1000mA	550~4200V	≤0.1% FS	1V	1mA	1V	1V	1mA
PCH4000-40HN	-800~ -4000V	0~1000mA	-800~ -4200V	≤0.1% FS	1V	1mA	1V	1V	1mA
PCH4000-50H	700~5000V	0~800mA	700~5250V	≤0.1% FS	1V	0.1mA	1V	1V	0.1mA
PCH4000-50HN	-1000~ -5000V	0~800mA	-1000~ -5250V	≤0.1% FS	1V	0.1mA	1V	1V	0.1mA
PCH4000-60H	800~6000V	0~660mA	800~6120V	≤0.1% FS	1V	0.1mA	1V	1V	0.1mA
PCH4000-60HN	-1200~ -6000V	0~660mA	-1200~ -6120V	≤0.1% FS	1V	0.1mA	1V	1V	0.1mA
Dimensions	482.6W×88H×533D mm (2U-L)								
Weight	Approx 14kg								
AC Input	3φ4W, 380V±10% 47~63Hz								

High Voltage DC Power Supply



Model (5000W)	Rated Output			Voltage Ripple	Programming Resolution			Display Resolution	
	V	A	OVP		V	A	OVP	V	A
PCH5000-10H	0~1000V	0~5000mA	0~1050V	≤0.1% FS	1V	1mA	1V	1V	1mA
PCH5000-10HN	-200~ -1000V	0~5000mA	-200~ -1050V	≤0.1% FS	1V	1mA	1V	1V	1mA
PCH5000-12H	0~1200V	0~4160mA	0~1260V	≤0.1% FS	1V	1mA	1V	1V	1mA
PCH5000-12HN	-240~ -1200V	0~4160mA	-240~ -1260V	≤0.1% FS	1V	1mA	1V	1V	1mA
PCH5000-15H	0~1500V	0~3300mA	0~1575V	≤0.1% FS	1V	1mA	1V	1V	1mA
PCH5000-15HN	-300~-1500V	0~3300mA	-300~ -1575V	≤0.1% FS	1V	1mA	1V	1V	1mA
PCH5000-20H	0~2000V	0~2500mA	0~2100V	≤0.1% FS	1V	1mA	1V	1V	1mA
PCH5000-20HN	-400~ -2000V	0~2500mA	-400~ -2100V	≤0.1% FS	1V	1mA	1V	1V	1mA
PCH5000-30H	400~3000V	0~1600mA	400~3150V	≤0.1% FS	1V	1mA	1V	1V	1mA
PCH5000-30HN	-600~ -3000V	0~1600mA	-600~ -3150V	≤0.1% FS	1V	1mA	1V	1V	1mA
PCH5000-40H	550~4000V	0~1250mA	550~4200V	≤0.1% FS	1V	1mA	1V	1V	1mA
PCH5000-40HN	-800~ -4000V	0~1250mA	-800~ -4200V	≤0.1% FS	1V	1mA	1V	1V	1mA
PCH5000-50H	700~5000V	0~1000mA	700~5250V	≤0.1% FS	1V	1mA	1V	1V	1mA
PCH5000-50HN	-1000~ -5000V	0~1000mA	-1000~ -5250V	≤0.1% FS	1V	1mA	1V	1V	1mA
PCH5000-60H	800~6000V	0~830mA	800~6120V	≤0.1% FS	1V	0.1mA	1V	1V	0.1mA
PCH5000-60HN	-1200~ -6000V	0~830mA	-1200~ -6120V	≤0.1% FS	1V	0.1mA	1V	1V	0.1mA
Dimensions	482.6W×88H×533D mm (2U-L)								
Weight	Approx 14kg								
AC Input	3φ4W, 380V±10% 47~63Hz								

High Voltage DC Power Supply



Model (6000W)	Rated Output			Voltage Ripple	Programming Resolution			Display Resolution	
	V	A	OVP		V	A	OVP	V	A
PCH6000-10H	0~1000V	0~6000mA	0~1050V	≤0.1% FS	1V	1mA	1V	1V	1mA
PCH6000-10HN	-200~ -1000V	0~6000mA	-200~ -1050V	≤0.1% FS	1V	1mA	1V	1V	1mA
PCH6000-12H	0~1200V	0~5000mA	0~1260V	≤0.1% FS	1V	1mA	1V	1V	1mA
PCH6000-12HN	-240~ -1200V	0~5000mA	-240~ -1260V	≤0.1% FS	1V	1mA	1V	1V	1mA
PCH6000-15H	0~1500V	0~4000mA	0~1575V	≤0.1% FS	1V	1mA	1V	1V	1mA
PCH6000-15HN	-300~-1500V	0~4000mA	-300~ -1575V	≤0.1% FS	1V	1mA	1V	1V	1mA
PCH6000-20H	0~2000V	0~3000mA	0~2100V	≤0.1% FS	1V	1mA	1V	1V	1mA
PCH6000-20HN	-400~ -2000V	0~3000mA	-400~ -2100V	≤0.1% FS	1V	1mA	1V	1V	1mA
PCH6000-30H	400~3000V	0~2000mA	400~3150V	≤0.1% FS	1V	1mA	1V	1V	1mA
PCH6000-30HN	-600~ -3000V	0~2000mA	-600~ -3150V	≤0.1% FS	1V	1mA	1V	1V	1mA
PCH6000-40H	550~4000V	0~1500mA	550~4200V	≤0.1% FS	1V	1mA	1V	1V	1mA
PCH6000-40HN	-800~ -4000V	0~1500mA	-800~ -4200V	≤0.1% FS	1V	1mA	1V	1V	1mA
PCH6000-50H	700~5000V	0~1200mA	700~5250V	≤0.1% FS	1V	1mA	1V	1V	1mA
PCH6000-50HN	-1000~ -5000V	0~1200mA	-1000~ -5250V	≤0.1% FS	1V	1mA	1V	1V	1mA
PCH6000-60H	800~6000V	0~1000mA	800~6120V	≤0.1% FS	1V	0.1mA	1V	1V	1mA
PCH6000-60HN	-1200~ -6000V	0~1000mA	-1200~ -6120V	≤0.1% FS	1V	0.1mA	1V	1V	1mA
Dimensions	482.6W×132.5H×533D mm (3U)								
Weight	Approx 18kg								
AC Input	3φ4W, 380V±10% 47~63Hz								

High Voltage DC Power Supply



Model (8000W)	Rated Output			Voltage Ripple	Programming Resolution			Display Resolution	
	V	A	OVP		V	A	OVP	V	A
PCH8000-10H	0~1000V	0~8000mA	0~1050V	≤0.1% FS	1V	1mA	1V	1V	1mA
PCH8000-10HN	-200~ -1000V	0~8000mA	-200~ -1050V	≤0.1% FS	1V	1mA	1V	1V	1mA
PCH8000-12H	0~1200V	0~6670mA	0~1260V	≤0.1% FS	1V	1mA	1V	1V	1mA
PCH8000-12HN	-240~ -1200V	0~6670mA	-240~ -1260V	≤0.1% FS	1V	1mA	1V	1V	1mA
PCH8000-15H	0~1500V	0~5330mA	0~1575V	≤0.1% FS	1V	1mA	1V	1V	1mA
PCH8000-15HN	-300~-1500V	0~5330mA	-300~ -1575V	≤0.1% FS	1V	1mA	1V	1V	1mA
PCH8000-20H	0~2000V	0~4000mA	0~2100V	≤0.1% FS	1V	1mA	1V	1V	1mA
PCH8000-20HN	-400~ -2000V	0~4000mA	-400~ -2100V	≤0.1% FS	1V	1mA	1V	1V	1mA
PCH8000-30H	400~3000V	0~2660mA	400~3150V	≤0.1% FS	1V	1mA	1V	1V	1mA
PCH8000-30HN	-600~ -3000V	0~2660mA	-600~ -3150V	≤0.1% FS	1V	1mA	1V	1V	1mA
PCH8000-40H	550~4000V	0~2000mA	550~4200V	≤0.1% FS	1V	1mA	1V	1V	1mA
PCH8000-40HN	-800~ -4000V	0~2000mA	-800~ -4200V	≤0.1% FS	1V	1mA	1V	1V	1mA
PCH8000-50H	700~5000V	0~1600mA	700~5250V	≤0.1% FS	1V	1mA	1V	1V	1mA
PCH8000-50HN	-1000~ -5000V	0~1600mA	-1000~ -5250V	≤0.1% FS	1V	1mA	1V	1V	1mA
PCH8000-60H	800~6000V	0~1330mA	800~6120V	≤0.1% FS	1V	0.1mA	1V	1V	1mA
PCH8000-60HN	-1200~ -6000V	0~1330mA	-1200~ -6120V	≤0.1% FS	1V	0.1mA	1V	1V	1mA
Dimensions	482.6W×132.5H×533D mm (3U)								
Weight	Approx 22kg								
AC Input	3φ4W, 380V±10% 47~63Hz								

For the purpose of product improvement, specifications are subject to change without prior notice.